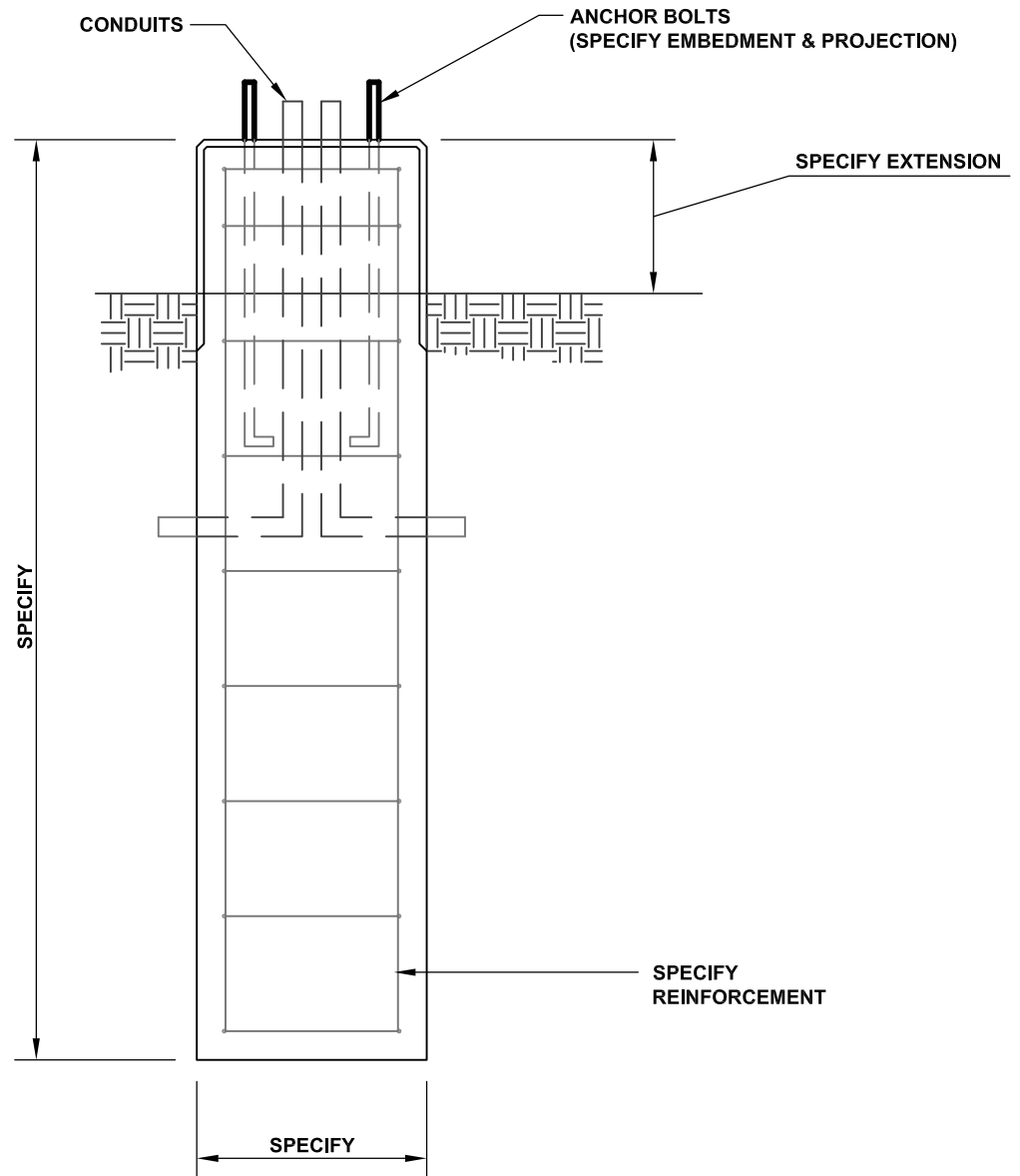


# DURASTONE

150 HIGGINSON AVENUE - LINCOLN, RI 02865 - Phone (401) 723-7100 - Fax (401) 723-6866

## SQUARE LIGHTBASE



ELEVATION

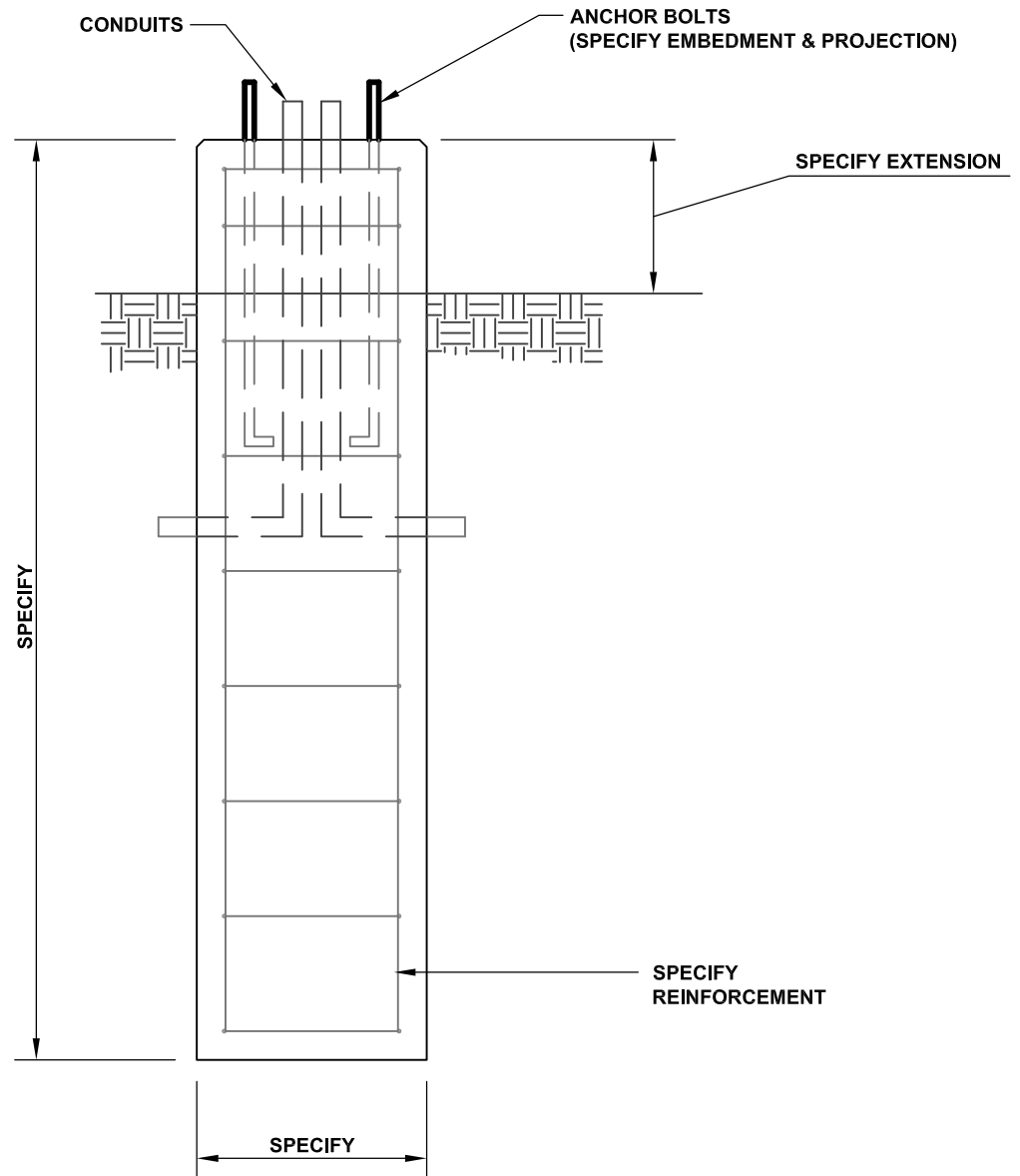
### STANDARD SPECIFICATIONS

1. MINIMUM CONCRETE COMPRESSIVE STRENGTH:  $f'_c = 3,500$  PSI.
2. DESIGN & DETAILING CODE: ACI318 (UNLESS OTHERWISE SPECIFIED).
3. REINFORCEMENT: ASTM A615 GRADE 60, MINIMUM 3" COVER.
4. SMOOTH FORM FINISH.
5. WIDTH & LENGTH AS REQUIRED.
6. CONDUIT & EMBEDMENTS AS REQUIRED.
7. ANCHOR BOLTS AND CONDUIT FURNISHED BY CONTRACTOR.

# DURASTONE

150 HIGGINSON AVENUE - LINCOLN, RI 02865 - Phone (401) 723-7100 - Fax (401) 723-6866

## ROUND LIGHTBASE



ELEVATION

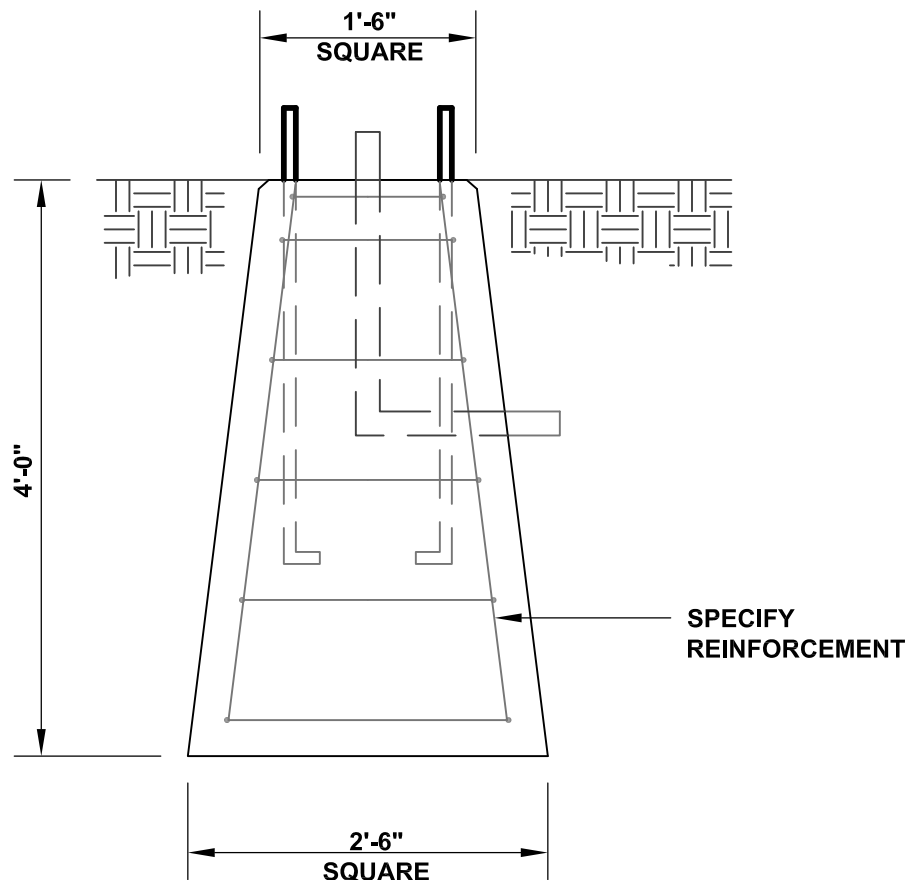
### STANDARD SPECIFICATIONS

1. MINIMUM CONCRETE COMPRESSIVE STRENGTH:  $f'_c = 3,500$  PSI.
2. DESIGN & DETAILING CODE: ACI318 (UNLESS OTHERWISE SPECIFIED).
3. REINFORCEMENT: ASTM A615 GRADE 60, MINIMUM 3" COVER.
4. SMOOTH FORM FINISH.
5. DIAMETER & LENGTH AS REQUIRED.
6. CONDUIT & EMBEDMENTS AS REQUIRED.
7. ANCHOR BOLTS AND CONDUIT FURNISHED BY CONTRACTOR.

# DURASTONE

150 HIGGINSON AVENUE - LINCOLN, RI 02865 - Phone (401) 723-7100 - Fax (401) 723-6866

## LIGHT STANDARD BASE



### ELEVATION

APPROX. WEIGHT: 2,600 LB

### STANDARD SPECIFICATIONS

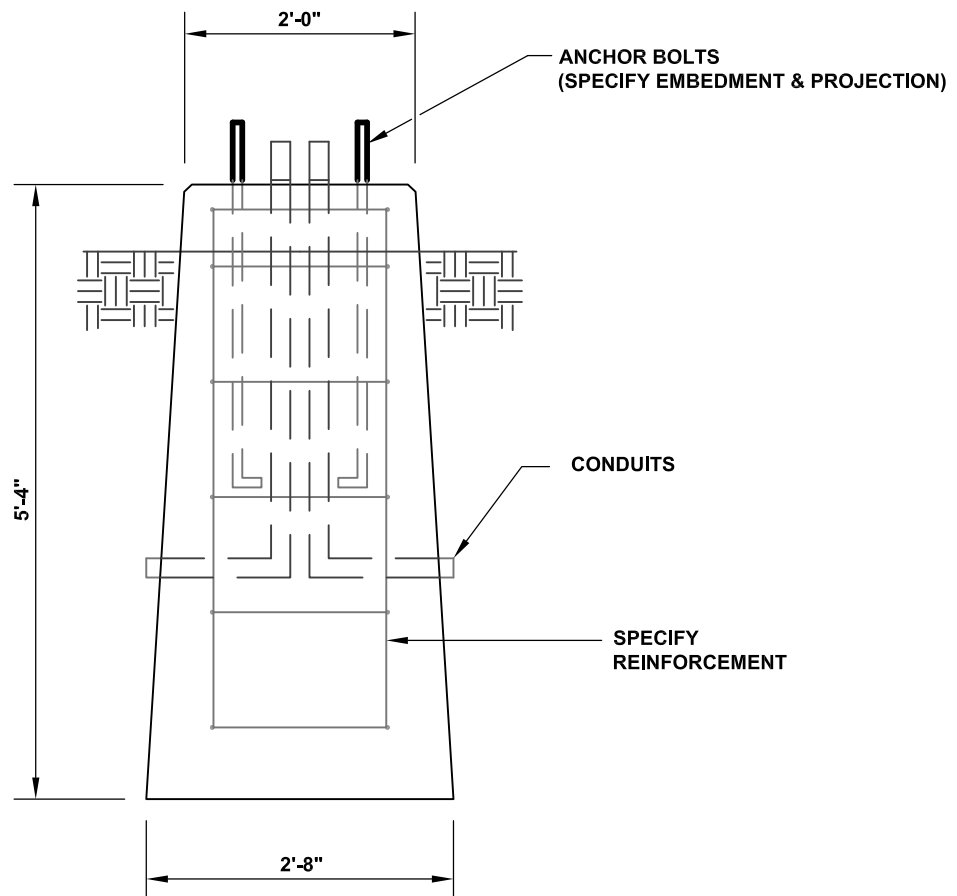
1. MINIMUM CONCRETE COMPRESSIVE STRENGTH  $f'_c = 3,500$  PSI.
2. DESIGN & DETAILING CODE: ACI318 (UNLESS OTHERWISE SPECIFIED).
3. REINFORCEMENT: ASTM A615 GRADE 60, MINIMUM 3" COVER.
4. STEEL FORM FINISH.
5. CONDUIT & EMBEDMENTS AS REQUIRED.
6. ANCHOR BOLTS, PATTERN, & CONDUIT FURNISHED BY CONTRACTOR.
7. CONFORMS TO RI STANDARD 18.1.

**NPCA**  
CERTIFIED PLANT

# DURASTONE

150 HIGGINSON AVENUE - LINCOLN, RI 02865 - Phone (401) 723-7100 - Fax (401) 723-6866

## SHALLOW TRAPEZOIDAL LIGHTBASE



**ELEVATION**

**APPROX. WEIGHT: 4,500 LB**

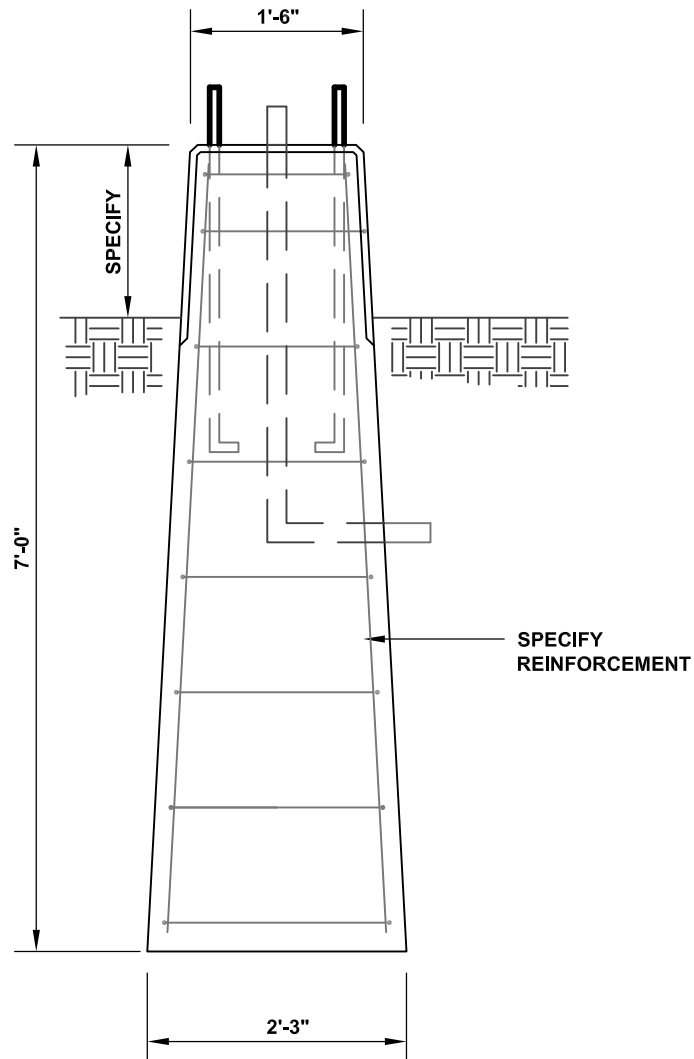
### STANDARD SPECIFICATIONS

1. MINIMUM CONCRETE COMPRESSIVE STRENGTH:  $f_c = 3,500$  PSI.
2. DESIGN & DETAILING CODE: ACI318 (UNLESS OTHERWISE SPECIFIED).
3. REINFORCEMENT: ASTM A615 GRADE 60, MINIMUM 3" COVER.
4. SMOOTH FORM FINISH.
5. CONDUIT & EMBEDMENTS AS REQUIRED.
6. ANCHOR BOLTS AND CONDUIT FURNISHED BY CONTRACTOR

# DURASTONE

150 HIGGINSON AVENUE - LINCOLN, RI 02865 - Phone (401) 723-7100 - Fax (401) 723-6866

## TRAPEZOIDAL LIGHTBASE



**ELEVATION**

**APPROX. WEIGHT: 3,900 LB**

### STANDARD SPECIFICATIONS

1. MINIMUM CONCRETE COMPRESSIVE STRENGTH:  $f'_c = 3,500$  PSI
2. DESIGN & DETAILING CODE: ACI318 (UNLESS OTHERWISE SPECIFIED)
3. REINFORCEMENT: ASTM A615 GRADE 60, MINIMUM 3" COVER
4. SMOOTH FORM FINISH
5. CONDUIT & EMBEDMENTS AS REQUIRED
6. ANCHOR BOLTS AND CONDUIT FURNISHED BY CONTRACTOR